

*Focused on the Future*  
**2018 Heifer Sale**



**Friday, July 27, 2018 • 10:00 a.m.**

*at the ranch, east of Estelline, Texas*

**Offering 60+ Angus & Charolais Weaned Heifers**

**Bradley 3 Ranch, Ltd.**

*Ranch raised bulls for Ranchers since 1955.*

**[www.bradley3ranch.com](http://www.bradley3ranch.com)**



# Welcome



You are invited to the Bradley 3 Ranch 7th Annual Summer Heifer Sale on Friday, July 27th.

We are excited to offer you a very nice set of females from our time-tested program. This year's large Angus offering includes daughters from our aged cows that have been productive in droughts and blizzard years, as well as, some of our upcoming female super stars. If you are looking to improve your cowherd's cash return, this set of heifers is genetically designed for less inputs, better breed up and added stayability. This set of sale heifers will offer all of this and much more!

We are going to start the sale off with our Charolais offering this year. For those of you who have attended the sale in the past, this is new. These heifers have not been on creep feed, nor have they seen green grass until they were weaned (their ranch location had less than an inch of rain since last fall). Study the heifers and you will find there are some very top end Charolais heifers in this offering. These are the kind that can make a positive impact on your herd for years to come.

We will video the heifers on July 10 in an effort to provide you with an accurate presentation of the heifers. Please check our website [www.Bradley3Ranch.com](http://www.Bradley3Ranch.com) to see these videos soon after July 10.

There is nothing like being at the sale to view the heifers and socialize with others. However, we understand that you may not be able to be at the ranch on sale day. Don't let schedules and work get in the way of your opportunity to own these females! We want to make bidding and buying at our sale easy and convenient for you. You can be on the phone with one of us to bid on sale day (we still believe in traditional phone bidding!) or you can bid on Superior Click to Bid. Even though we are down a long, dusty road, does not mean we are not hi-tech! To bid on Superior Click to Bid you must have high speed internet and register prior to the sale. To learn more about the process see "How it Works" on page 20.

In closing, we want to say **THANK YOU** to all of you who have purchased cattle from us. Your investment allows us to re-invest in our people, the land and cattle. Rest assured, we are very dedicated to make a difference for you with better cattle. *We look forward to being your host on Friday, July 27th.*

## Bradley 3 Ranch, Ltd.

15991 CR K  
Memphis, TX 79245  
806-888-1062, office  
806-888-1010, fax  
Mary Lou Bradley-Henderson  
940-585-6471  
James Henderson  
940-585-6171  
Minnie Lou Bradley  
[www.bradley3ranch.com](http://www.bradley3ranch.com)

# *A Herd with a History...*

---



2014 Minnie Lou Bradley inducted into Saddle & Sirloin Portrait Gallery

2013 BIF Seedstock Producer of the Year

2009 CAB Commitment to Excellence Award

2009 NCBA Regional Land Stewardship Recipient

2008 American Angus Assn. Beef Heritage Award

2006 National Cowgirl Hall of Fame Inductee (Minnie Lou Bradley)

2004 B3R Country Meats introduced Certified Angus Beef® Natural

2003 NCBA Innovative Cattlemen Award

2002 Ladd Hitch Award

2001 BIF Pioneer Award

# Sale Schedule

## IMPORTANT UPDATES

THE HEIFERS WILL NOT ENTER THE SALE RING, BUT WILL BE PENNED FOR EASY VIEWING.

HEIFERS WEANED MAY 25, 2018

PLEASE NOTE, THE CHAROLAIS CALVES DID NOT SEE ANY GREEN FORAGE UNTIL THEY WERE WEANED. WE ARE WAITING ON A RAIN AT THE CHAROLAIS RANCH.

WE PLAN TO OFFER A FEW EXTRA, NON-SALE BOOK LOTS, CHECK BACK FOR UPDATES.

HEIFER VIDEO ONLINE...  
TO BID ONLINE,  
REGISTER AT  
WWW.SUPERIORLIVESTOCK.COM

SALE STARTS WITH  
CHAROLAIS HEIFERS  
FOUND ON PAGE 21.



SEE PAGE 25 FOR MORE  
INFORMATION ON  
SUPERIOR'S CLICK TO BID

## Welcome to the 2018 Weaned Heifer Sale!

This is our 7th annual Weaned Heifer Sale.

### Sale Staff & Contacts –

Bradley 3 Ranch, Ltd  
15591 CR K  
Memphis, TX 79245  
Mary Lou Bradley-Henderson, (940) 585-6471  
James Henderson, (940) 585-6171  
Tyrel Cloudt, Cow Herd Manager, (970) 759-9023  
Doak Lambert, Auctioneer, (972) 471-1233  
Radale Tiner, American Angus Association, (979) 492-2663

### Load Out –

Load out of heifers will begin following the the sale. This is a cash and carry sale.

### Sale Schedule –

**July 26** – Sale heifers sorted by pen  
Heifers available for viewing  
Beverages available

**July 27** – Heifer sale to start at **10 am**  
Beverages and snacks available  
Will load immediately after sale

### Sale Information –

Heifers sold in Lot order, and penned by Lot series, heifers with lot numbers 1-1 are in pen 1, Lots 2-2 are in pen 2 and so on. Heifers do not enter the sale ring, but they are penned very close by, for viewing. The sale will feature video and we encourage you to mark your sale catalog as to those heifers you have an interest in. Charolais heifers sell first, followed by the Angus heifers.

### Registration Papers –

Registration papers will be transferred to the new owner.

### The Auction and Minimum Prices –

Each heifer has a minimum price published in our sale book. Bidding will begin at these minimum prices. **Each heifer will be sold to the highest bidder and disputes will be settled by the Auctioneer.**

### Sale Heifer Information –

- All heifers have been weaned 30 days +
- Heifers are NOT Bangs Vaccinated.
- All heifers have EID and Visual Ear Tag
- All the Angus heifers have been i50k Tested

### Liabilities –

All persons attending the Bradley 3 Ranch, Ltd sale do so at their own risk. Bradley 3 Ranch, Ltd assumes no liability, legal or otherwise, for any accidents that might occur on or about the premises. Announcements made at the sale from the auction block will take precedence over the statements in the sale book.

### Genetic Defect Policy –

Any Angus sale heifers that were potential genetic defect carriers have been tested and are known to be free of AM, NH, CA, DD and OS as of 6/15/18.

### Directions to the ranch –

See back of catalog.

# *Sale Order*

---



**This year, the sale will start with the Charolais heifers found on page 21, with Lot 1.**

**15-3 B3R E178 Zara Z151 8069**

Adj Yrlg Hip Ht	Birth Date: 11/09/17	i50K	Cow	*19082742	Tattoo: E178					
	CED	BW	WW	YW	RADG	DMI	YH			
	+12 .32	-2.7 .53	+43 .46	+83 .37	+13 .22	+84 .22	+6 .40			
Adj Yrlg Scr Cir	SC	Doc	HP	CEM	Milk	MW	MH			
	+02 .40	+24 .34	+12.3 .18	+9 .26	+35 .28	+11 .32	+0 .38			
Adj % IMF	\$EN	CW	Marb	RE	Fat	\$W				
	-14.18	+31 .39	+88 .34	+91 .34	-008 .30	+57.45				
% IMF Ratio	G A R Predestined [DDC-AMF-XF]						\$F			
	Three Trees Double Design [DDF]						\$F			
	Rita 4L1 of 2536 208 [AMF-CAF-NHF]						+26.59			
Adj RE	B3R Z151 Rito 3TDD X325						\$G			
	17521621 B3R S192 Rito 0128 1043 [AMF]						+52.91			
	B3R X325 Carmen S192 1098						\$QG			
	B3R 1098 9030 Carmen 7089 [AMF]						+43.09			
RE Ratio	Boyd New Day 8005 [AMF-CAF-XF]						\$YG			
	GDAR Game Day 449 [AMF-CAF-XF]						+9.82			
	G D A R Miss Wix 474						\$B			
Adj Rib Fat	B3R B069 Zara 449 9788						\$B			
	18101347 Mytty In Focus [AMF-CAF-XF]						+113.95			
	RHCC Zara IF 9788 [DDF-NHF]									
	RHCC Zara 7488 [NHC]									
Rib Fat Ratio	BW	CE	BWR	ADJ WW	WWR	ADJ YW	YWR	Test ADG	GR	
	66	1	95	519	101					
Adj Rump Fat	Dam's Production Record					Dam's Ultrasound Production Record				
	ACT BW	BWR	WWR	YWR	% IMF	RE	Fat	RU Fat		
	2-74	2-109	2-90							
Rump Fat Ratio	Price: \$1300 Take real look here, Top 3% \$G and Top 10% Tenderness, Top 20% \$W, Super Calving Ease, Top 25% Heifer Pregnancy and a Weaning Ratio of 101.									



*New mom – very attentive to the camera person!*



*CAB Staff, Brand the Barn painter, Troy and some very special friends that joined us for celebration day of Barn #10 being painted with the CAB logo.*

**17-3 B3R E164 Barbara X523 B353**

Adj Yrlg Hip Ht	Birth Date: 10/14/17	i50K	Cow	*19082819	Tattoo: E164					
	CED	BW	WW	YW	RADG	DMI	YH			
	+3 .29	+1 .49	+33 .42	+56 .34	+11 .16	-17 .16	-2 .36			
Adj Yrlg Scr Cir	SC	Doc	HP	CEM	Milk	MW	MH			
	+55 .35	+16 .30	+10.4 .12	+4 .24	+18 .25	-30 .30	-6 .36			
Adj % IMF	\$EN	CW	Marb	RE	Fat	\$W				
	+22.37	+10 .34	+1.03 .29	+41 .30	+038 .25	+35.55				
% IMF Ratio	Gardens Highmark [AMF-CAF-XF]						\$F			
	Gardens Wave [AMF-CAF-XF]						+6.74			
	Green Garden Lady 6255 S2						\$G			
Adj RE	B3R Real Money X523 [AMF-DDF-OSF]						\$G			
	16927035 B3R 9030 DL 7585						+51.43			
	B3R R191 Blackcap 9030 1220 [AMF]						\$QG			
	B3R 1220 7095 Queen 3112						+46.53			
RE Ratio	Gardens Wave [AMF-CAF-XF]						\$YG			
	B3R Prime Wave T299 [AMF-OSF]						+4.90			
	B3R R060 Pride 0004 N295						\$B			
Adj Rib Fat	B3R B353 Barbara Y248 P097						\$B			
	18099941 B3R 9201 270 Bando 102						+81.75			
	B3R P097 9201 Barbara 3149 [AMF]									
	B3R 500 Erica 3761									
Rib Fat Ratio	BW	CE	BWR	ADJ WW	WWR	ADJ YW	YWR	Test ADG	GR	
	73	1	104	483	93					
Adj Rump Fat	Dam's Production Record					Dam's Ultrasound Production Record				
	ACT BW	BWR	WWR	YWR	% IMF	RE	Fat	RU Fat		
	2-73	2-106	2-101	1-105	1-103	1-112	1-100	1-96		
Rump Fat Ratio	Price: \$1300 Quality and Efficiency in a heifer with Top 10% \$G, made up of Top 10% Marbling and Top 10% Tenderness and a Top 2% \$EN with a Top 15% DMI EPD and Top 25% BW									

**16-3 B3R E159 Miss Doll 547V B145**

Adj Yrlg Hip Ht	Birth Date: 10/21/17	i50K	Cow	*19082986	Tattoo: E159					
	CED	BW	WW	YW	RADG	DMI	YH			
	+6 .30	+7 .51	+45 .44	+81 .35	+20 .20	+10 .20	-3 .38			
Adj Yrlg Scr Cir	SC	Doc	HP	CEM	Milk	MW	MH			
	+42 .38	+17 .32	+4.6 .16	+0 .25	+8 .27	+23 .29	-3 .35			
Adj % IMF	\$EN	CW	Marb	RE	Fat	\$W				
	+21.17	+18 .37	+43 .32	+83 .32	-003 .28	+28.24				
% IMF Ratio	Rito 707 of Ideal 3407 7075 [OSF]						\$F			
	S A V Resource 1441 [AMF-CAF-XF]						+36.69			
	S A V Blackcap May 4136 [CAF]						\$G			
Adj RE	Connealy Resource 620A						\$G			
	18460863 Connealy Leader [AMF-CAF-XF]						+38.28			
	Babe Bobbie of Conanga 1109						\$QG			
	Babe of Conanga 528						+27.94			
RE Ratio	B3R S192 Rito 0128 1043 [AMF]						\$YG			
	B3R 0128 Rito 3091 4004 [AMF]						+10.34			
	B3R 1043 616 Blikbird 9128 [AMF]						\$B			
Adj Rib Fat	B3R B145 Miss Doll S192 9180 [OSF]						\$B			
	*118105946 B3R Bando 2073 P						+85.56			
	B3R 9180 270 Queen 114 [AMF]									
	B3R 700 Queen 1880									
Rib Fat Ratio	BW	CE	BWR	ADJ WW	WWR	ADJ YW	YWR	Test ADG	GR	
	74	1	105	489	94					
Adj Rump Fat	Dam's Production Record					Dam's Ultrasound Production Record				
	ACT BW	BWR	WWR	YWR	% IMF	RE	Fat	RU Fat		
	2-71	2-104	2-93	1-99	1-100	1-100	1-100	1-100		
Rump Fat Ratio	Price: \$1300 Cutability and Low Costs with a Top 1% \$YG and a Top 3% \$EN with a Top 10% RE EPD.									

**18-3 B3R E316 Blackbird A288 Y187**

Adj Yrlg Hip Ht	Birth Date: 11/18/17	i50K	Cow	*19082822	Tattoo: E316					
	CED	BW	WW	YW	RADG	DMI	YH			
	+8 .24	+9 .44	+41 .38	+73 .28	+23 .08	-59 .08	+1 .30			
Adj Yrlg Scr Cir	SC	Doc	HP	CEM	Milk	MW	MH			
	+69 .29	+13 .23	+9.6 .05	+1 .15	+14 .18	-7 .21	-6 .26			
Adj % IMF	\$EN	CW	Marb	RE	Fat	\$W				
	+19.40	+20 .27	+59 .22	+45 .24	+044 .19	+34.44				
% IMF Ratio	Basin Franchise P142 [NHC-AMF-XF]						\$F			
	B3R U149 96 B Franchise 7105 [AMF-NHF]						+39.30			
	B3R 7105 270 Blackcap 104						\$G			
Adj RE	B3R A288 96 U149 9180 [OSF]						\$G			
	*17779423 B3R Bando 2073 P						+37.70			
	B3R 9180 270 Queen 114 [AMF]						\$QG			
	B3R 700 Queen 1880						+34.27			
RE Ratio	Basin Franchise P142 [NHC-AMF-XF]						\$YG			
	B3R U149 96 B Franchise 7105 [AMF-NHF]						+3.43			
	B3R 7105 270 Blackcap 104						\$B			
Adj Rib Fat	B3R Y187 Blackbird U149 W160						\$B			
	17224574 B3R P045 M048 Cafd M254 [AMF-NHF]						+101.40			
	B3R W160 Blackbird P045 P328									
	B3R P328 Legend Blikbird 9057 [AMF]									
Rib Fat Ratio	BW	CE	BWR	ADJ WW	WWR	ADJ YW	YWR	Test ADG	GR	
	84	1	115	511	99					
Adj Rump Fat	Dam's Production Record					Dam's Ultrasound Production Record				
	ACT BW	BWR	WWR	YWR	% IMF	RE	Fat	RU Fat		
	5-79	5-108	5-93	3-94	3-102	3-94	3-91	3-92		
Rump Fat Ratio	Price: \$1300 Help yourself to Efficiency with this heifer that has a Top 3% \$EN and Top 2% DMI EPD.									

19-3 B3R E237 Carla C278 C238

Table for B3R E237 Carla C278 C238. Columns include Birth Date, i50K, Cow, \*19082973, Tattoo: E237. Rows include Adj Yr/ Hip Ht, Adj Yr/ Scr Cir, Adj % IMF, % IMF Ratio, Adj RE, RE Ratio, Adj Rib Fat, Rib Fat Ratio, and Rump Fat Ratio. Includes dam's production and ultrasound records.

21-3 B3R E075 KEP Miss A177 U123

Table for B3R E075 KEP Miss A177 U123. Columns include Birth Date, i50K, Cow, 19082830, Tattoo: E075. Rows include Adj Yr/ Hip Ht, Adj Yr/ Scr Cir, Adj % IMF, % IMF Ratio, Adj RE, RE Ratio, Adj Rib Fat, Rib Fat Ratio, and Rump Fat Ratio. Includes dam's production and ultrasound records.

23-4 B3R E220 Blackbird B141 C253

Table for B3R E220 Blackbird B141 C253. Columns include Birth Date, i50K, Cow, \*19082882, Tattoo: E220. Rows include Adj Yr/ Hip Ht, Adj Yr/ Scr Cir, Adj % IMF, % IMF Ratio, Adj RE, RE Ratio, Adj Rib Fat, Rib Fat Ratio, and Rump Fat Ratio. Includes dam's production and ultrasound records.

20-3 B3R E381 Erioria W233 A321

Table for B3R E381 Erioria W233 A321. Columns include Birth Date, i50K, Cow, \*19082828, Tattoo: E381. Rows include Adj Yr/ Hip Ht, Adj Yr/ Scr Cir, Adj % IMF, % IMF Ratio, Adj RE, RE Ratio, Adj Rib Fat, Rib Fat Ratio, and Rump Fat Ratio. Includes dam's production and ultrasound records.

22-3 B3R E072 Primrose A177 2692

Table for B3R E072 Primrose A177 2692. Columns include Birth Date, i50K, Cow, 19082848, Tattoo: E072. Rows include Adj Yr/ Hip Ht, Adj Yr/ Scr Cir, Adj % IMF, % IMF Ratio, Adj RE, RE Ratio, Adj Rib Fat, Rib Fat Ratio, and Rump Fat Ratio. Includes dam's production and ultrasound records.

24-4 B3R E313 Blackbird B040 U095

Table for B3R E313 Blackbird B040 U095. Columns include Birth Date, i50K, Cow, \*19082811, Tattoo: E313. Rows include Adj Yr/ Hip Ht, Adj Yr/ Scr Cir, Adj % IMF, % IMF Ratio, Adj RE, RE Ratio, Adj Rib Fat, Rib Fat Ratio, and Rump Fat Ratio. Includes dam's production and ultrasound records.



**25-4 B3R E149 Butchess X523 B090**

Adj Yrlg Hip Ht	Birth Date: 11/01/17	i50K	Cow	*19082760	Tattoo: E149					
	CED	BW	WW	YW	RADG	DMI	YH			
	+6 .31	-1.0 .50	+25 .44	+48 .35	+07 .19	+11 .19	-3 .38			
Adj Yrlg Scr Cir	SC	Doc	HP	CEM	Milk	MW	MH			
	+1.90 .37	+27 .31	+8.3 .14	+10 .25	+17 .26	-62 .32	-7 .37			
Adj % IMF	\$EN	CW	Marb	RE	Fat	\$W				
	+30.36	+14 .36	+87 .31	+38 .32	+062 .28	+30.10				
% IMF Ratio	Gardens Highmark [AMF-CAF-XF]						\$F			
	Gardens Wave [AMF-CAF-XF]						-7.20			
	Green Garden Lady 6255 S2						\$G			
Adj RE	B3R Real Money X523 [AMF-DDF-OSF]						\$G			
	16927035 B3R 9030 DL 7585						+44.69			
	B3R R191 Blackcap 9030 1220 [AMF]						\$QG			
	B3R 1220 7095 Queen 3112						+42.75			
RE Ratio	B3R 9030 DL 7585						\$YG			
	B3R Pioneer Wave Y409 [AMF-CAF-XF]						+1.94			
	HR T424 R026 GW						\$B			
Adj Rib Fat	B3R B090 Dutchess Y409 Z154 [OSF]						\$B			
	*18100180 B3R W233 Elector TendTn R310 [OSF]						+76.84			
	B3R Z154 Dutchess W233 X069									
	B3R X069 Dutchess GARRP 8093									
Rib Fat Ratio	BW	CE	BWR	ADJ WW	WWR	ADJ YW	YWR	Test ADG	GR	
	70	1	100	517	100					
Adj Rump Fat	Dam's Production Record				Dam's Ultrasound Production Record					
	ACT BW	BWR	WWR	YWR	% IMF	RE	Fat	RU Fat		
	2-70	2-98	2-105	1-109	1-121	1-115	1-112	1-97		
Rump Fat Ratio	Price: \$1300									
	Maternal Sister to the Lead Off Bull of B3R's 2018 Bull Sale, she possesses a Top 10% BW EPD, Scrotal EOD Top 3%, Docility EPD Top 10%, Marbling EPD Top 15%, \$EN Top									

**26-4 B3R E376 Erica B325 W037**

Adj Yrlg Hip Ht	Birth Date: 11/03/17	i50K	Cow	19082817	Tattoo: E376					
	CED	BW	WW	YW	RADG	DMI	YH			
	+14 .29	-3.9 .49	+16 .43	+29 .33	+10 .15	-62 .15	-7 .36			
Adj Yrlg Scr Cir	SC	Doc	HP	CEM	Milk	MW	MH			
	+39 .34	+21 .31	+14.4 .14	+9 .22	+19 .25	-24 .28	-6 .34			
Adj % IMF	\$EN	CW	Marb	RE	Fat	\$W				
	+26.52	-3 .34	+89 .29	-24 .29	+058 .25	+18.84				
% IMF Ratio	B3R Tender Ten R065 [OSC-AMF-XF]						\$F			
	B3R Back To Basics U077 [AMF-CAF-XF]						-17.57			
	B3R S024 Elise P061 N191						\$G			
Adj RE	B3R B325 Elector BtB W278 [OSF]						\$G			
	*18100059 B3R Tender Ten R065 [OSC-AMF-XF]						+41.77			
	B3R W278 Blackbird R065 R141 [OSF]						\$QG			
	B3R R141 Blackbird RDAm 203 [AMF]						+43.38			
RE Ratio	O C C Emblazon 854E [AMF-CAF-XF]						\$YG			
	B3R N193 854E Emblazon 9180 [AMF-CAF-XF]						-1.61			
	B3R 9180 270 Queen 114 [AMF]						\$B			
Adj Rib Fat	B3R W037 Erica N193 T184 [OSF]						\$B			
	16634340 B3R 1147 8100 Bando 8092 [AMF]						+49.56			
	B3R T184 Erica 1147 P302 [AMF-OSF]									
	B3R P302 0004 Erica 1162									
Rib Fat Ratio	BW	CE	BWR	ADJ WW	WWR	ADJ YW	YWR	Test ADG	GR	
	65	1	89	477	93					
Adj Rump Fat	Dam's Production Record				Dam's Ultrasound Production Record					
	ACT BW	BWR	WWR	YWR	% IMF	RE	Fat	RU Fat		
	6-58	6-87	6-95	3-100	3-90	3-103	3-109	3-106		
Rump Fat Ratio	Price: \$1300									
	2 Maternal Sisters in B3R Herd, CED Top 2%, BW EPD Top 1%, DMI EPD Top 2%, Heifer Pregnancy EPD Top 10%, Marbling EPD Top 20%, \$EN Top 2%, \$QG Top 15%.									



**Troy the painter, starts the process at night by projecting the CAB image onto the barn.**

**28-4 B3R E279 Nancy Z180 R039**

Adj Yrlg Hip Ht	Birth Date: 09/29/17	i50K	Cow	*19082704	Tattoo: E279					
	CED	BW	WW	YW	RADG	DMI	YH			
	+8 .28	-2.9 .50	+24 .44	+37 .35	+12 .15	-45 .15	-2 .38			
Adj Yrlg Scr Cir	SC	Doc	HP	CEM	Milk	MW	MH			
	+36 .37	+23 .32	+11.2 .11	+10 .22	+30 .25	-26 .28	-5 .34			
Adj % IMF	\$EN	CW	Marb	RE	Fat	\$W				
	+9.59	+4 .34	+25 .29	+09 .30	+010 .26	+40.07				
% IMF Ratio	B3R Tender Ten R065 [OSC-AMF-XF]						\$F			
	B3R W233 Elector TendTn R310 [OSF]						-13.19			
	B3R R310 Daisy 0128 0135 [AMF]						\$G			
Adj RE	B3R Z180 Heifer Safe [OSF]						\$G			
	17521640 B3R Retail Tender T232 [OSF]						+24.36			
	B3R X189 Blackbird T232 T037 [OSF]						\$QG			
	B3R T037 Blackbird 0097 R264 [AMF-OS]						+19.32			
RE Ratio	C A Future Direction 5321 [AMC-NHC-XF]						\$YG			
	B3R M048 Cafd 0125 [AMF-NHF]						+5.04			
	B3R 0125-7629 Erica 3179						\$B			
Adj Rib Fat	B3R R039 Blackbird M048 N123						\$B			
	#15327897 B3R 8082 3173 Elector 4013 [AMF-OSF]						+44.82			
	B3R N123 8082 Blackbird 203 [AMF]									
	B3R Blackbird 2075 P									
Rib Fat Ratio	BW	CE	BWR	ADJ WW	WWR	ADJ YW	YWR	Test ADG	GR	
	63	1	86	416	79					
Adj Rump Fat	Dam's Production Record				Dam's Ultrasound Production Record					
	ACT BW	BWR	WWR	YWR	% IMF	RE	Fat	RU Fat		
	4-64	4-93	8-106	6-99	16-100	16-101	16-102	16-100		
Rump Fat Ratio	Price: \$1300									
	A product out of B3R's strict Embryo program. Not many chances to buy one as a heifer. Top 1% BW EPD, Top 5% DMI EPD, Top 25% Docility EPD, Top 10% Milk EOD, Top 10%									

**29-4 B3R E147 Lady Z180 B173**

Adj Yrlg Hip Ht	Birth Date: 10/09/17	i50K	Cow	*19082821	Tattoo: E147					
	CED	BW	WW	YW	RADG	DMI	YH			
	+8 .27	-1.5 .48	+30 .42	+40 .33	+09 .13	-51 .13	-3 .35			
Adj Yrlg Scr Cir	SC	Doc	HP	CEM	Milk	MW	MH			
	+23 .34	+17 .29	+9.2 .09	+9 .20	+26 .22	-39 .27	-6 .33			
Adj % IMF	\$EN	CW	Marb	RE	Fat	\$W				
	+16.43	+7 .32	+46 .27	+23 .28	+035 .24	+45.74				
% IMF Ratio	B3R Tender Ten R065 [OSC-AMF-XF]						\$F			
	B3R W233 Elector TendTn R310 [OSF]						-10.87			
	B3R R310 Daisy 0128 0135 [AMF]						\$G			
Adj RE	B3R Z180 Heifer Safe [OSF]						\$G			
	17521640 B3R Retail Tender T232 [OSF]						+33.15			
	B3R X189 Blackbird T232 T037 [OSF]						\$QG			
	B3R T037 Blackbird 0097 R264 [AMF-OS]						+29.23			
RE Ratio	B3R Prime Wave T299 [AMF-OSF]						\$YG			
	B3R X183 Elector T299 T248						+3.92			
	B3R T248 KEP Miss M070 8123 [AMF]						\$B			
Adj Rib Fat	B3R B173 Lilly X183 N123 [OSF]						\$B			
	*18106073 B3R 8082 3173 Elector 4013 [AMF-OSF]						+61.38			
	B3R N123 8082 Blackbird 203 [AMF]									
	B3R Blackbird 2075 P									
Rib Fat Ratio	BW	CE	BWR	ADJ WW	WWR	ADJ YW	YWR	Test ADG	GR	
	62	1	89	469	90					
Adj Rump Fat	Dam's Production Record				Dam's Ultrasound Production Record					
	ACT BW	BWR	WWR	YWR	% IMF	RE	Fat	RU Fat		
	2-60	2-91	2-101							
Rump Fat Ratio	Price: \$1300									
	Efficient, DMI Top 3% and \$EN Top 4%, Low BW with BW EPD Top 5%, and a Top 25% Milk EPD.									



35-5 B3R E117 Dolly W233 A151

Table with columns: Adj Yrlg Hip Ht, Birth Date, CED, BW, WW, YW, RADG, DMI, YH, etc. Includes dam's production record and ultrasound production record.

37-5 B3R E303 Blackbird A288 W122

Table with columns: Adj Yrlg Hip Ht, Birth Date, CED, BW, WW, YW, RADG, DMI, YH, etc. Includes dam's production record and ultrasound production record.

39-6 B3R E083 Zara A263 9788

Table with columns: Adj Yrlg Hip Ht, Birth Date, CED, BW, WW, YW, RADG, DMI, YH, etc. Includes dam's production record and ultrasound production record.

36-5 B3R E368 Erica W233 A318

Table with columns: Adj Yrlg Hip Ht, Birth Date, CED, BW, WW, YW, RADG, DMI, YH, etc. Includes dam's production record and ultrasound production record.

38-6 B3R E118 Lady Z422 Z203

Table with columns: Adj Yrlg Hip Ht, Birth Date, CED, BW, WW, YW, RADG, DMI, YH, etc. Includes dam's production record and ultrasound production record.

40-6 B3R E106 Lady Z422 U022

Table with columns: Adj Yrlg Hip Ht, Birth Date, CED, BW, WW, YW, RADG, DMI, YH, etc. Includes dam's production record and ultrasound production record.



46-7

B3R E310 Blackbird A288 Z313

Table with columns: Adj Yrlg Hip Ht, Birth Date, i50K, Cow, \*19082922, Tattoo: E310, CED, BW, WW, YW, RADG, DMI, YH, etc.

48-7

B3R E222 Primrose B040 C061

Table with columns: Adj Yrlg Hip Ht, Birth Date, i50K, Cow, \*19082899, Tattoo: E222, CED, BW, WW, YW, RADG, DMI, YH, etc.

50-7

B3R E103 Carla C474 Z204

Table with columns: Adj Yrlg Hip Ht, Birth Date, i50K, Cow, \*19082717, Tattoo: E103, CED, BW, WW, YW, RADG, DMI, YH, etc.

47-7

B3R E377 Dutchess B325 X084

Table with columns: Adj Yrlg Hip Ht, Birth Date, i50K, Cow, 19082818, Tattoo: E377, CED, BW, WW, YW, RADG, DMI, YH, etc.

49-7

B3R E089 BlkCndce A263 2409

Table with columns: Adj Yrlg Hip Ht, Birth Date, i50K, Cow, \*19082857, Tattoo: E089, CED, BW, WW, YW, RADG, DMI, YH, etc.

51-7

B3R E223 Lilly B121 C080

Table with columns: Adj Yrlg Hip Ht, Birth Date, i50K, Cow, \*19082900, Tattoo: E223, CED, BW, WW, YW, RADG, DMI, YH, etc.











73-10

B3R E179 Miss Doll X523 B175

Table with columns: Adj Yrlg Hip Ht, Birth Date, CED, BW, WW, YW, RADG, DMI, YH, etc. Includes dam and rump fat records.

74-10

B3R E170 Carla Z180 B171

Table with columns: Adj Yrlg Hip Ht, Birth Date, CED, BW, WW, YW, RADG, DMI, YH, etc. Includes dam and rump fat records.

75-10

B3R E166 Dutchess Z180 B131

Table with columns: Adj Yrlg Hip Ht, Birth Date, CED, BW, WW, YW, RADG, DMI, YH, etc. Includes dam and rump fat records.

76-10

B3R E086 Primrose A177 0691

Table with columns: Adj Yrlg Hip Ht, Birth Date, CED, BW, WW, YW, RADG, DMI, YH, etc. Includes dam and rump fat records.

77-10

B3R E190 Belle C278 C339

Table with columns: Adj Yrlg Hip Ht, Birth Date, CED, BW, WW, YW, RADG, DMI, YH, etc. Includes dam and rump fat records.



Cattle have been worked off a horse, as well as on foot and a 4-wheeler.

78-10 B3R E109 Miss Doll W233 A108

Adj Yrlg Birth Date: 11/19/17 i50K Cow \*19082729 Tattoo: E109  
Hip Ht CED BW WW YW RADG DMI YH  
+12 .29 -3.2 .49 +34.43 +54.35 +17.14 -7.77 .14 -1.37  
Adj Yrlg SC Doc HP CEM Milk MW MH  
Scr Cir +57.36 +19.31 +11.2.11 +6.23 +22.25 -16.30 -6.36  
Adj %IMF \$EN CW Marb RE Fat \$W  
+15.44 +7.33 +.35.28 +.13.29 +.034.25 +43.58  
%IMF B3R 0004 Electra 8082-8017 [OSC-AMF-XF] \$F  
Ratio B3R Tender Ten R065 [OSC-AMF-XF] +14.95  
B3R N127 5522 Blackbird 203 [OSF] \$G  
Adj RE 16634469 B3R W233 Elector TendTn R310 [OSF] +27.38  
B3R R310 Daisy 0128 0135 [AMF] \$QG  
B3R 0135-270 Daisy 4010  
RE +24.33  
Ratio B3R 0128 Rito 3091 4004 [AMF] \$YG  
B3R S192 Rito 0128 1043 [AMF]  
B3R 1043 616 Blkbrd 9128 [AMF]  
Adj B3R A108 Miss Doll S192 9180 \$B  
Rib Fat +\*17779429 B3R Bando 2073 P  
B3R 9180 270 Queen 114 [AMF] +63.03  
B3R 700 Queen 1880

Rib Fat Ratio BW CE BWR ADJ WW WWR ADJ YW YWR Test ADG GR  
67 1 93 510 99

Adj Dam's Production Record Dam's Ultrasound Production Record  
Rump Fat ACT BW BWR WWR YWR % IMF RE Fat RU Fat  
3-72 3-103 3-100 2-103 2-95 2-106 2-110 2-100

Rump Fat Ratio Price: \$1300  
More Calving ease and Efficiency. CED EPD Top 10%, BW EPD Top 1%, DMI EPD Top 1%, \$EN Top 4%.

80-14 B3R E110 Queen Z422 Y082

Adj Yrlg Birth Date: 10/17/17 i50K Cow \*19082730 Tattoo: E110  
Hip Ht CED BW WW YW RADG DMI YH  
+1 .30 +4.4.52 +43.46 +78.37 +21.20 -15.20 +3.40  
Adj Yrlg SC Doc HP CEM Milk MW MH  
Scr Cir +82.40 +23.34 +13.0.16 +7.25 +14.28 +17.31 +2.37  
Adj %IMF \$EN CW Marb RE Fat \$W  
+14.68 +19.37 +.65.33 +.55.33 -0.002.29 +21.88  
%IMF Cross Down T Stockman 3525 \$F  
Ratio B3R M070 Stockman 9180 [AMF] +37.81  
B3R 9180 270 Queen 114 [AMF] \$G  
Adj RE \*17515429 HR W501 Wave R150 [AMF] +44.34  
Gardens Wave [AMF-CAF-XF] \$QG  
B3R R150 Elba 9193 1256  
RE +36.34  
Ratio B3R T079 Retail G A R Retail Product [AMF-CAF-XF] \$YG  
Product N278 [AMF-OSF]  
B3R N278 0004 Erica 0061 [AMF]  
B3R N278 0004 Erica 0061 [AMF]  
Adj B3R Y082 Queen T079 S185 [OHF] \$B  
Rib Fat 17224546 B3R 0128 Rito 3091 4004 [AMF]  
B3R S185 Queen 0128 0014 [AMF] +98.18  
B3R 0014-3173 Queen 8212

Rib Fat Ratio BW CE BWR ADJ WW WWR ADJ YW YWR Test ADG GR  
91 1 125 542 104

Adj Dam's Production Record Dam's Ultrasound Production Record  
Rump Fat ACT BW BWR WWR YWR % IMF RE Fat RU Fat  
4-70 4-100 4-99 3-104 3-105 3-107 3-100 3-128

Rump Fat Ratio Price: \$1300  
Docile, fertile, tender and efficient. Docility EPD Top 20%, Heifer Pregnancy Top 15%, Tenderness Top 20%, DMI EPD Top 20%, \$G Top 25%, \$YG Top 5%. Weaning Ratio

82-14 B3R E378 Erica B325 U086 [OH P]

Adj Yrlg Birth Date: 10/24/17 i50K Cow \*19082808 Tattoo: E378  
Hip Ht CED BW WW YW RADG DMI YH  
+12 .28 -1.4.49 +34.42 +51.33 +16.14 -6.4.14 -1.36  
Adj Yrlg SC Doc HP CEM Milk MW MH  
Scr Cir +62.34 +23.31 +8.9.11 +10.21 +31.25 -3.27 -3.32  
Adj %IMF \$EN CW Marb RE Fat \$W  
+1.65 +7.33 +.71.28 +.20.29 +.024.24 +48.46  
%IMF B3R Tender Ten R065 [OSC-AMF-XF] \$F  
Ratio B3R Back To Basics U077 [AMF-CAF-XF] +7.28  
B3R S024 Elise P061 N191 \$G  
Adj RE \*18100059 B3R Tender Ten R065 [OSC-AMF-XF] +42.89  
B3R W278 Blackbird R065 R141 [OSF] \$QG  
B3R R141 Blackbird RDAm 203 [AMF]  
RE +38.33  
Ratio B3R N193 854E O C C Emblazon 854E [AMF-CAF-XF] \$YG  
Emblazon 9180 [AMF-CAF-XF]  
B3R 9180 270 Queen 114 [AMF]  
Adj B3R U086 Erica N193 S147 \$B  
Rib Fat 16317741 B3R N117 Rock D AM 203 [AMF]  
B3R S147 Erica N117 P318 +75.28  
B3R P318 0179 Erica 7743

Rib Fat Ratio BW CE BWR ADJ WW WWR ADJ YW YWR Test ADG GR  
81 1 111 557 107

Adj Dam's Production Record Dam's Ultrasound Production Record  
Rump Fat ACT BW BWR WWR YWR % IMF RE Fat RU Fat  
7-73 7-105 8-109 7-107 7-94 7-104 7-105 7-111

Rump Fat Ratio Price: \$1300  
Out of a proven 10 year old cow with two other daughters in B3R Herd. CED EPD Top 15%, BW EPD Top 10%, DMI EPD Top 2%, Docility EPD Top 25%, Milk EPD Top 10%.

Waiting on OH test results at time of printing.

79-10 B3R E154 Blackbird Z180 B321

Adj Yrlg Birth Date: 11/06/17 i50K Cow \*19082780 Tattoo: E154  
Hip Ht CED BW WW YW RADG DMI YH  
+7 .29 -3.49 +27.43 +53.34 +17.16 -4.2.16 -2.37  
Adj Yrlg SC Doc HP CEM Milk MW MH  
Scr Cir +38.35 +25.30 +10.3.11 +4.22 +28.24 +4.29 -3.34  
Adj %IMF \$EN CW Marb RE Fat \$W  
+4.57 +18.34 +.36.29 +.04.30 +.025.25 +31.91  
%IMF B3R Tender Ten R065 [OSC-AMF-XF] \$F  
Ratio B3R W233 Elector TendTn R310 [OSF] +10.70  
B3R R310 Daisy 0128 0135 [AMF] \$G  
Adj RE 17521640 B3R Z180 Heifer Safe [OSF] +26.08  
B3R Retail Tender T232 [OSF] \$QG  
B3R X189 Blackbird T232 T037 [OSF]  
B3R T037 Blackbird 0097 R264 [AMF-OSF]  
RE +24.70  
Ratio Gardens Wave [AMF-CAF-XF] \$YG  
B3R Prime Wave T299 [AMF-OSF]  
B3R R060 Pride 0004 N295  
Adj B3R B321 Blackbird T299 S040 \$B  
Rib Fat \*18099961 G A R Retail Product [AMF-CAF-XF]  
B3R S040 Blkbrd GARRP N123 [OSF] +78.43  
B3R N123 8082 Blackbird 203 [AMF]

Rib Fat Ratio BW CE BWR ADJ WW WWR ADJ YW YWR Test ADG GR  
75 1 107 493 96

Adj Dam's Production Record Dam's Ultrasound Production Record  
Rump Fat ACT BW BWR WWR YWR % IMF RE Fat RU Fat  
2-70 2-102 2-95 1-93 1-98 1-80 1-115 1-96

Rump Fat Ratio Price: \$1300  
Lots of Maternal, BW EPD Top 20%, DMI EPD Top 10%, Docility EPD Top 15%, Milk EPD Top 10%, \$EN Top 20%.

81-14 B3R E296 Blackbird A288 Z314

Adj Yrlg Birth Date: 10/21/17 i50K Cow \*19082938 Tattoo: E296  
Hip Ht CED BW WW YW RADG DMI YH  
+3 .30 +2.8.50 +49.43 +80.34 +16.17 -0.2.17 +2.37  
Adj Yrlg SC Doc HP CEM Milk MW MH  
Scr Cir +1.49.36 +24.30 +14.1.14 +3.23 +23.25 +6.28 -2.34  
Adj %IMF \$EN CW Marb RE Fat \$W  
+4.31 +30.35 +.60.30 +.42.31 +.027.27 +47.69  
%IMF Basin Franchise P142 [NHC-AMF-XF] \$F  
Ratio B3R U149 96 B Franchise 7105 [AMF-NHF] +34.58  
B3R 7105 270 Blackcap 104 \$G  
Adj RE \*17779423 B3R Bando 2073 P +37.82  
B3R 9180 270 Queen 114 [AMF] \$QG  
B3R 700 Queen 1880  
RE +34.62  
Ratio B3R Replicate U019 Rockn D Ambush 1531 [AMF-CAF-XF] \$YG  
B3R Blackbird 2075 P  
Adj B3R Z314 Blackbird U019 T037 [OSF] \$B  
Rib Fat 17521758 S A F Connection [AMF-CAF-XF]  
B3R T037 Blackbird 0097 R264 [AMF-OSF] +112.54  
B3R R264 Blackbird 0004 N219 [AMF]

Rib Fat Ratio BW CE BWR ADJ WW WWR ADJ YW YWR Test ADG GR  
85 1 116 547 105

Adj Dam's Production Record Dam's Ultrasound Production Record  
Rump Fat ACT BW BWR WWR YWR % IMF RE Fat RU Fat  
4-71 4-105 4-114 3-111 3-86 3-103 3-87 3-96

Rump Fat Ratio Price: \$1300  
Docile and fertile. Docility EPD Top 15%, Scrotal EPD Top 15%, Heifer Pregnancy EPD Top 10%, \$EN Top 20%, Weaning Ratio 102.

83-14 B3R E317 blackbird Z151 A215

Adj Yrlg Birth Date: 10/20/17 i50K Cow \*19082772 Tattoo: E317  
Hip Ht CED BW WW YW RADG DMI YH  
-1 .29 +9.50 +41.43 +72.34 +17.17 -15.17 +4.37  
Adj Yrlg SC Doc HP CEM Milk MW MH  
Scr Cir +71.36 +16.31 +11.5.13 +4.22 +26.25 -2.28 -3.34  
Adj %IMF \$EN CW Marb RE Fat \$W  
+3.19 +23.35 +.79.30 +.24.31 +.037.26 +46.30  
%IMF G A R Predestined [DDC-AMF-XF] \$F  
Ratio Three Trees Double Design [DDF] +28.57  
Rita 4L1 of 2536 208 [AMF-CAF-NHF] \$G  
Adj RE 17521621 B3R Z151 Rito 3TDD X325 +42.18  
B3R S192 Rito 0128 1043 [AMF]  
B3R S192 1098 \$QG  
B3R 1098 9030 Carmen 7089 [AMF]  
RE +40.60  
Ratio Gardens Wave [AMF-CAF-XF] \$YG  
B3R Prime Wave T299 [AMF-OSF]  
B3R R060 Pride 0004 N295  
Adj B3R A215 Blackbird T299 X215 \$B  
Rib Fat 17779612 B3R M070 Stockman 9180 [AMF]  
B3R X215 Blackbird M070 R141 +103.03  
B3R R141 Blackbird RDAm 203 [AMF]

Rib Fat Ratio BW CE BWR ADJ WW WWR ADJ YW YWR Test ADG GR  
83 1 115 571 109

Adj Dam's Production Record Dam's Ultrasound Production Record  
Rump Fat ACT BW BWR WWR YWR % IMF RE Fat RU Fat  
3-75 3-108 3-103 1-99 1-93 1-108 1-150 1-76

Rump Fat Ratio Price: \$1300  
Carcass and Maternal. Marbling EPD Top 25%, \$QG Top 20%, DMI EPD Top 20%, Milk EPD Top 25%, \$EN Top 20% Weaning Ratio 109.



89-15 B3R E379 Erica B325 Z239. Includes table with columns: Adj Yr/rg, Hip Ht, CED, BW, WW, YW, RADG, DMI, YH, etc. Summary statistics: Price: \$1300, Maternal and Efficient, CED Top 1%, BW EPD Top 1%, DMI EPD Top 1%, Milk EPD Top 5%, SEN Top 10%, Tenderness Top 10%.

91-15 B3R E085 Erica A177 W250. Includes table with columns: Adj Yr/rg, Hip Ht, CED, BW, WW, YW, RADG, DMI, YH, etc. Summary statistics: Price: \$1300, A lot to like out of this proven 9 year old cow. CED EPD Top 20%, BW EPD Top 10%, DMI EPD Top 10%, Heifer Pregnancy EPD Top 20%, SEN Top 4%, Tenderness EPD Top.

93-15 B3R E084 Blackcap A177 U195. Includes table with columns: Adj Yr/rg, Hip Ht, CED, BW, WW, YW, RADG, DMI, YH, etc. Summary statistics: Price: \$1300, 3 maternal sisters in B3R Herd. BW EPD Top 15%, SEN Top 1%, Tenderness Top 25%, SYG Top 1%, Weaning Ratio 104.

90-15 B3R E126 Elise Z422 W227. Includes table with columns: Adj Yr/rg, Hip Ht, CED, BW, WW, YW, RADG, DMI, YH, etc. Summary statistics: Price: \$1300, Another out of a proven 9 year old cow. DMI EPD Top 10%, SEN Top 1%, Fat EPD Top 25%, Tenderness Top 15%, SYG Top 2%.

92-15 B3R E245 Lady X523 B292. Includes table with columns: Adj Yr/rg, Hip Ht, CED, BW, WW, YW, RADG, DMI, YH, etc. Summary statistics: Price: \$1300, Nice Heifer. DMI EPD Top 25%, Docility EPD Top 15%, SEN Top 1%, Tenderness Top 20%, Weaning Ratio 103.

94-15 B3R E167 Erica Z180 B249. Includes table with columns: Adj Yr/rg, Hip Ht, CED, BW, WW, YW, RADG, DMI, YH, etc. Summary statistics: Price: \$1300, I hope you have room on your trailer for this one. BW EPD Top 25%, DMI EPD Top 3%, Docility EPD Top 15%, Milk EPD Top 20%, SEN Top 4%, Tenderness Top 4%, Weaning Ratio 104.

**95-15 B3R E328 Blackbird A288 T080**

Adj Yrlg	Birth Date: 10/21/17	i50K	Cow	19082791	Tattoo: E328					
Hip Ht	CED	BW	WW	YW	RADG	DMI	YH			
	-2 .28	+2.5 .49	+27 .43	+43 .34	+16 .15	-.63 .15	-1 .37			
Adj Yrlg	SC	Doc	HP	CEM	Milk	MW	MH			
Scr Cir	-.56 .36	+3 .30	+10.1 .13	+1 .22	+17 .26	-16 .28	-2 .33			
Adj	\$EN	CW	Marb	RE	Fat	\$W				
% IMF	+24.14	+5 .34	+5.56 .29	+5.56 .30	+0.04 .25					
% IMF	Basin Franchise P142 [NHC-AMF-XF]					\$F				
Ratio	B3R U149 96 B Franchise 7105 [AMF-NHF]					-1.65				
	B3R A288 96 U149 9180 [OSF]					\$G				
Adj RE	+*17779423 B3R Bando 2073 P					+42.46				
	B3R 9180 270 Queen 114 [AMF]					\$QG				
	B3R 700 Queen 1880					+33.18				
RE	TC Stockman					\$YG				
Ratio	Cross Down T Stockman 3525					+9.28				
	E L Barbara T 3525					\$B				
Adj	B3R T080 Blkbird 3525T N096 [AMF]					\$B				
Rib Fat	16020113 B3R 8082 3173 Elector 4013 [AMF-OSF]					+69.46				
	B3R N096 8082 BLACKBIRD203 [AMF]									
	B3R Blackbird 2075 P									
Rib Fat	BW	CE	BWR	ADJ WW	WWR	ADJ YW	YWR	Test ADG	GR	
Ratio	96	1	133	527	101					
Adj	Dam's Production Record					Dam's Ultrasound Production Record				
Rump Fat	ACT BW	BWR	WWR	YWR	% IMF	RE	Fat	RU Fat		
	7-73	7-105	9-105	7-99	7-113	7-103	7-110	7-107		
Rump	Price: \$1300									
Fat Ratio	If you like longevity, she is out of an 11 year old cow. DMI EPD Top 2%, \$EN Top 2%, \$G Top 25%, \$YG Top 1%, Weaning Ratio 101.									

**97-15 B3R E137 Lady Z422 Y210**

Adj Yrlg	Birth Date: 11/08/17	i50K	Cow	*19082890	Tattoo: E137					
Hip Ht	CED	BW	WW	YW	RADG	DMI	YH			
	+5 .30	+2.5 .51	+24 .44	+45 .35	+13 .18	-.31 .18	+2 .38			
Adj Yrlg	SC	Doc	HP	CEM	Milk	MW	MH			
Scr Cir	+.86 .38	+23 .32	+8.4 .15	+11 .24	+19 .27	-8 .30	+1 .35			
Adj	\$EN	CW	Marb	RE	Fat	\$W				
% IMF	+19.62	+12 .36	+6.66 .31	+2.6 .32	+0.30 .28					
% IMF	Cross Down T Stockman 3525					\$F				
Ratio	B3R M070 Stockman 9180 [AMF]					-2.97				
	B3R 9180 270 Queen 114 [AMF]					\$G				
Adj RE	*17515429 HR W501 Wave R150 [AMF]					+40.65				
	Gardens Wave [AMF-CAF-XF]					\$QG				
	B3R R150 Elba 9193 1256					+36.72				
RE	B/R New Design 323 [DDC]					\$YG				
Ratio	B/R New Design 323-8212 [DDF]					+3.93				
	B/R Elsa Trojan Erica 518					\$B				
Adj	B3R Y210 Lady 8212 W236					+76.64				
Rib Fat	17229407 B3R S192 Rito 0128 1043 [AMF]									
	B3R W236 Lady S192 N065									
	B3R N065 854E Lady 1258									
Rib Fat	BW	CE	BWR	ADJ WW	WWR	ADJ YW	YWR	Test ADG	GR	
Ratio	75	1	103	544	106					
Adj	Dam's Production Record					Dam's Ultrasound Production Record				
Rump Fat	ACT BW	BWR	WWR	YWR	% IMF	RE	Fat	RU Fat		
	5-70	5-100	5-104	4-111	4-132	4-107	4-121	4-117		
Rump	Price: \$1300									
Fat Ratio	2 maternal sisters in B3R Herd. DMI EPD Top 15%, Docility EPD Top 20%, CEM EPD Top 20%, \$EN Top 2%, Weaning Ratio 106.									

As of 06/21/18

**96-15 B3R E241 Blackbird Z151 A306**

Adj Yrlg	Birth Date: 10/16/17	i50K	Cow	*19082778	Tattoo: E241					
Hip Ht	CED	BW	WW	YW	RADG	DMI	YH			
	+16 .32	-3.9 .53	+30 .46	+64 .37	+0.6 .21	+86 .21	+4 .41			
Adj Yrlg	SC	Doc	HP	CEM	Milk	MW	MH			
Scr Cir	+40 .40	+35 .34	+8.5 .16	+9 .26	+36 .28	+41 .31	+3 .38			
Adj	\$EN	CW	Marb	RE	Fat	\$W				
% IMF	-15.38	+18 .38	+8.80 .33	+2.27 .33	+0.42 .30					
% IMF	G A R Predestined [DDC-AMF-XF]					\$F				
Ratio	Three Trees Double Design [DDF]					+1.43				
	Rita 4L1 of 2536 208 [AMF-CAF-NHF]					\$G				
Adj RE	B3R Z151 Rito 3TDD X325					+43.01				
	17521621 B3R S192 Rito 0128 1043 [AMF]					\$QG				
	B3R X325 Carmen S192 1098					+40.86				
RE	B3R 1098 9030 Carmen 7089 [AMF]					\$YG				
Ratio	B3R N193 854E Emblazon 9180 [AMF-CAF]					+2.15				
	B3R T296 Emblazon N193 1046 [AMF-DDF]					\$B				
Adj	B3R A306 Blackbird T296 W266 [OSF]					\$B				
Rib Fat	17779574 B3R Tender Ten R065 [OSC-AMF-XF]					+71.58				
	B3R W266 Blackbird R065 R264									
	B3R R264 Blackbird 0004 N219 [AMF]									
Rib Fat	BW	CE	BWR	ADJ WW	WWR	ADJ YW	YWR	Test ADG	GR	
Ratio	59	1	82	507	97					
Adj	Dam's Production Record					Dam's Ultrasound Production Record				
Rump Fat	ACT BW	BWR	WWR	YWR	% IMF	RE	Fat	RU Fat		
	3-59	3-90	3-96	1-103	1-110	1-94	1-96	1-89		
Rump	Price: \$1300									
Fat Ratio	Quality, Calving Ease, Docility and maternal. CED EPD Top 1%, BW EPD Top 1%, Docility EPD Top 1%, Milk EPD Top 1%, Marbling EPD Top 20%, \$QG Top 15%.									



**HOW TO PARTICIPATE ON THE PHONE OR ONLINE USING SUPERIORCLICKTOBID.COM**

**Turn in Bids Over the Phone:** This is our traditional method of buying livestock. To get started simply go online to [www.superiorlivestock.com](http://www.superiorlivestock.com) and click on the tab titled "Register for a Buyer Number". Select the registration form for Superior Productions and print the registration form, fill it out and fax it in to Superior Productions at (817) 378-3380 with a signature on it, or scan and email the form to [info@superiorauction.com](mailto:info@superiorauction.com). You can also mail it in to the address provided on the form. Upon receipt of this information Superior will call you with a buyer's number and the bid line phone number that you will use on sale day to place bids over the phone.

**Click-To-Bid:** This is Superior's online bidding platform for cattle buying. Please note that high speed internet is required - this is not for dial-up or satellite internet. Registration is free, but you must become a member of [www.superiorclicktobid.com](http://www.superiorclicktobid.com) to sign up. Becoming a member is easy - just go to the homepage of [www.superiorclicktobid.com](http://www.superiorclicktobid.com) and follow the out-lined steps to get started. Input your information and select a username and password. You will receive an e-mail confirming you are a member. From that point forward you just have to sign in and select the sale you would like to register for and once approved you will receive an e-mail confirming which sale you are now registered for.

**Viewing the Auction:** There are 2 places to view the sale broadcast live on the internet: [www.superiorlivestock.com](http://www.superiorlivestock.com) or [www.superiorclicktobid.com](http://www.superiorclicktobid.com). Just go to the home page of either website and select the auction. If you just want to watch the auction on your computer, smartphone or tablet go to [www.superiorlivestock.com](http://www.superiorlivestock.com), but if you want to bid over the computer you must go to [www.superiorclicktobid.com](http://www.superiorclicktobid.com). Remember you can call in to bid while watching on the internet, but you must be a member of [www.superiorclicktobid.com](http://www.superiorclicktobid.com) to "click-to-bid". Your computer must have Flash Media Player installed for this website to view the auction. If you have any questions, please call the Superior Productions office at 800-431-4452.

**Bidders who are successful in making purchases via satellite or internet will be contacted by the ranch after the sale to settle payment and make shipping arrangements.**



**Reference Sire,  
M6 Cool Maker 261**



**Lot 1-1**

**B3R E040 CCR Z261 W010**

Birth Date: 11/27/17

Reg. #: F1255726

Tattoo: E040

M6 COOL MAKER 261 P  
M828790

M6 COOL REP 8108 ET

M6 COOL DUDE 6463 P ET  
SR LADY EASE 914 ET  
M6 GRID MAKER 104 PET  
M6 927 COMMANDER 3165 ET  
M6 FUNCTION 169 PET  
MS COOLEY ORIG 8046N13ET  
LC SIMPLICITY 9015PLD ET  
MS CCR S 5627 1107F22 ET

B3R W010 COOLEY SMPLOT  
8046S6 - EF1118540

M6 MS 104 COMMANDER 7184 P ET  
COOLEY LIMESTONE 8046S6

MS COOLEY SMPLOT 1107M34

EPDs	CE	BW	WW	YW	Milk	MCE	Mtl	TSI
	4.8	1.9	25	48	16.9	5.7	30	193.9
Performance	BW	AWW						
	97	522						

Price: \$1300

This heifer will add cutability with a Top 15% RE EPD and Top 15% Fat EPD as well as great weaning calves with a Top 20% Total Maternal EPD.

**Lot 2-1**

**B3R E029 CCR Z261 X017**

Birth Date: 10/4/17

Reg. #: F1255455

Tattoo: E029

M6 COOL MAKER 261 P  
M828790

M6 COOL REP 8108 ET

B3R X017 MS CCR M207 7L 4P  
EF1134450

M6 MS 104 COMMANDER 7184 P ET  
B/T SMART CHOICE M207 ET

MS CCR TRAD 1107L4 P

EPDs	CE	BW	WW	YW	Milk	MCE	Mtl	TSI
	4.4	-0.54	25	42	16.9	5.7	29.565	190.56
Performance	BW	AWW						
	86	562						

Price: \$1300

Another High cutability heifer with a Top 3% RE EPD and a Top 4% fat EPD and she will wean big calves with a Top 20% Total Maternal EPD.

### Lot 3-1

### B3R E027 JDJ Z261 X019

Birth Date: 10/22/17

Reg. #: F1255456

Tattoo: E027

M6 COOL MAKER 261 P  
M828790

M6 COOL REP 8108 ET

M6 COOL DUDE 6463 P ET  
SR LADY EASE 914 ET  
M6 GRID MAKER 104 PET  
M6 927 COMMANDER 3165 ET  
LT WYOMING WIND 4020 PLD  
LC MISS LACI CAE 104  
LHD MR PERFECT Y416  
JDJ MS MAGIC E197 TW

B3R X019 JDJ MS 0109 G166  
EF1134974

M6 MS 104 COMMANDER 7184 P ET  
LC SUSPECT 0109 P ET

JDJ MS PERFECT G166

EPDs	CE	BW	WW	YW	Milk	MCE	Mtl	TSI
	6.95	-1.11	25	42	14.25	4.45	26.665	190.91
Performance	BW	AWW						
	80	535						

Price: \$1300

Easy calving with a Top 25% BW EPD and great cutability with a Top 3% RE EPD and Top 15% Fat EPD.

### Lot 5-1

### B3R E026 CCR Z261 Y024

Birth Date: 10/10/17

Reg. #: F1255458

Tattoo: E026

M6 COOL MAKER 261 P  
M828790

M6 COOL REP 8108 ET  
SR LADY EASE 914 ET

M6 COOL DUDE 6463 P ET

B3R Y024 CCR TRAD L9P 0327  
EF1149405

M6 MS 104 COMMANDER 7184 P ET  
RC CHARLIE 0327

M6 GRID MAKER 104 PET  
M6 927 COMMANDER 3165 ET  
SCRSUPERCHARLIE0767PD  
RC NICHOLE 9821  
WCR SIR TRADITION 066  
MS CCR PRIME CUT 1107J6

MS CCR TRAD 1107L9 P

EPDs	CE	BW	WW	YW	Milk	MCE	Mtl	TSI
	4.2	-1.22	20	38	16.8	2.85	26.835	188.53
Performance	BW	AWW						
	80	527						

Price: \$1300

Easy calving with a Top 25% BW EPD and low fat with a Top 7% Fat EPD.

### Lot 7-1

### B3R E028 CCR Z261 Z016

Birth Date: 10/21/17

Reg. #: F1255459

Tattoo: E028

M6 COOL MAKER 261 P  
M828790

M6 COOL REP 8108 ET  
SR LADY EASE 914 ET

M6 COOL DUDE 6463 P ET

B3R Z016 CCR M207 1385  
EF1163565

M6 MS 104 COMMANDER 7184 P ET  
B/T SMART CHOICE M207 ET

M6 GRID MAKER 104 PET  
M6 927 COMMANDER 3165 ET  
LHD CIGAR E46  
MISS HOODOO Z6017  
EATONS LEADER 2233 P  
MS CC SCHURSHOT 1385M

MS COOLEY LEADER 1385P

EPDs	CE	BW	WW	YW	Milk	MCE	Mtl	TSI
	6.1	-1.45	20	37	9.45	8.55	19.36	186.24
Performance	BW	AWW						
	83	483						

Price: \$1300

Calving Ease and High Cutability in one package with a Top 20% BW EPD, a Top 20% CEM EPD, a Top 9% RE EPD and Top 20% Fat EPD.

### Lot 4-1

### B3R E018 CCR 5106 Y019

Birth Date: 10/18/17

Reg. #: F1255457

Tattoo: E018

M6 COOL & STOUT 5106 P ET  
EM875922

M6 COOL REP 8108 ET  
SR LADY EASE 914 ET

M6 COOL DUDE 6463 P ET

B3R Y019 CCR TRAD L9P 0327  
EF1149402

M6 MS RIO MAKER 9106 P ET  
RC CHARLIE 0327

LT RIO BLANCO 1234 P  
PJ MS. GRIDMAKER 602 P  
SCRSUPERCHARLIE0767PD  
RC NICHOLE 9821  
WCR SIR TRADITION 066  
MS CCR PRIME CUT 1107J6

MS CCR TRAD 1107L9 P

EPDs	CE	BW	WW	YW	Milk	MCE	Mtl	TSI
	1.2	4.15	36	61	14.9	3.05	32.685	201.82
Performance	BW	AWW						
	108	627						

Price: \$1300

This heifer will wean big calves with a Top 20% WW EPD and a Top 7% Total Maternal EPD.

### Lot 6-1

### B3R E010 CCR Z261 204U4

Birth Date: 10/25/17

Reg. #: F1254998

Tattoo: E010

M6 COOL MAKER 261 P  
M828790

M6 COOL REP 8108 ET  
SR LADY EASE 914 ET

M6 COOL DUDE 6463 P ET

MS COOLEY CHARLIE 204U4  
EF1095166

M6 MS 104 COMMANDER 7184 P ET  
RC CHARLIE 0327

M6 GRID MAKER 104 PET  
M6 927 COMMANDER 3165 ET  
SCRSUPERCHARLIE0767PD  
RC NICHOLE 9821  
LC SIMPLICITY 9015PLD ET  
MS CCR PRIME CUT 204J P

MS COOLEY SMLPCTY 204P

EPDs	CE	BW	WW	YW	Milk	MCE	Mtl	TSI
	6	-0.96	19	35	13.65	1.05	23.065	185.96
Performance	BW	AWW						
	89	515						

Price: \$1300

Out of a proven 10 year old dam with a Top 25% BW EPD, a Top 25% RE EPD and a Top 25% Fat EPD.

### Lot 8-2

### B3R E044 CCR Z231 B016

Birth Date: 10/17/17

Reg. #: F1255257

Tattoo: E044

M6 BLANCO STANDARD 231 ET  
EM825180

M6 NEW STANDARD 842 P ET  
M6 MS GRID MAKER 2175 ET

LT RIO BRAVO 3181 P

B3R B016 CCR Z061 Y024  
P ET  
F1199712

M6 MS RIO GRADE 960 P ET  
M6 COOL MAKER 261 P

LT RIO BLANCO 1234 P  
BF MISS GAIN & GRADE 386  
M6 COOL REP 8108 ET  
M6 MS 104 COMMANDER 7184

B3R Y024 CCR TRAD L9P 0327

RC CHARLIE 0327  
MS CCR TRAD 1107L9 P

EPDs	CE	BW	WW	YW	Milk	MCE	Mtl	TSI
	7.4	-3.46	23	51	15.6	4.7	27.065	207.87
Performance	BW	AWW						
	66	475						

Price: \$1300

Carcass, Fertility and Calving Ease in this heifer with a Top 5% Marbling EPD, Top 25% CW EPD, Top 25% RE EPD Top 3% Scrotal EPD and Top 4% BW EPD.



Y024, dam to Lot 5-1 has been a consistent producer.



## Lot 9-2 B3R E003 CCR 456 C023

**Birth Date:** 11/14/17 **Reg. #:** F1255446 **Tattoo:** E003

M6 TEN WHISTLES 456 P  
M859441

B3R C023 CCR Y029 A009  
F1217173

M6 BELLS & WHISTLES 258 P

M6 MS TEN MAKER 1100  
B3R TEXAS DINERO Y029

B3R A009 X28 X015

M6 COOL REP 8108 ET  
M6 MS GAIN & GRADE 552 P  
KEYS TEN-ACIOUS 166S  
M6 MS TRADITION 526  
THREE TREES WIND 0383 ET  
ROR MS MARK 555  
SSR RED DIRT X28  
B3R X015 FUNCTION 169 P2ET

EPDs	CE	BW	WW	YW	Milk	MCE	Mtl	TSI
	5.75	2.08	37	71	9.5	5.95	28.22	215.81
Performance	BW	AWW						
	97	566						

Price: \$1300

What's not to like about this daughter of a first calf heifer? Top 20% WW EPD, Top 15% YW EPD, Top 15% Scrotal EPD, Top 25% Total Maternal EPD, Top 25% CW EPD, Top 7% RE EPD, Top 20% Fat EPD and Top 15% Terminal Sire Index.

## Lot 11-2 B3R E017 CCR 456 Z025 TW

**Birth Date:** 10/7/17 **Reg. #:** F1255462 **Tattoo:** E017

M6 TEN WHISTLES 456 P  
M859441

B3R Z025 CCR M2079020M  
EF1163568

M6 BELLS & WHISTLES 258 P

M6 MS TEN MAKER 1100  
B/T SMART CHOICE M207 ET

MS COOLEY SKY E 9020M ET

M6 COOL REP 8108 ET  
M6 MS GAIN & GRADE 552 P  
KEYS TEN-ACIOUS 166S  
M6 MS TRADITION 526  
LHD CIGAR E46  
SKY HOODOO Z6017  
SKY MONT EASE 2078  
WCR MISS IMPRESS 9020ETP

EPDs	CE	BW	WW	YW	Milk	MCE	Mtl	TSI
	0.95	1.35	37	67	9.5	3.75	28.2	212.13
Performance	BW	AWW						
	90	378						

Price: \$1100

The larger of the twins out of Z025 and a full sib to E016 with the same great multiple top EPD's.

## Lot 13-2 B3R E054 CCR 5106 6601U20

**Birth Date:** 10/29/17 **Reg. #:** F1255729 **Tattoo:** E054

M6 COOL & STOUT 5106 P ET  
EM875922

MS COOLEY SUSPECT 6601U20  
EF1103725

M6 COOL REP 8108 ET

M6 MS RIO MAKER 9106 P ET  
LC SUSPECT 0109 P ET

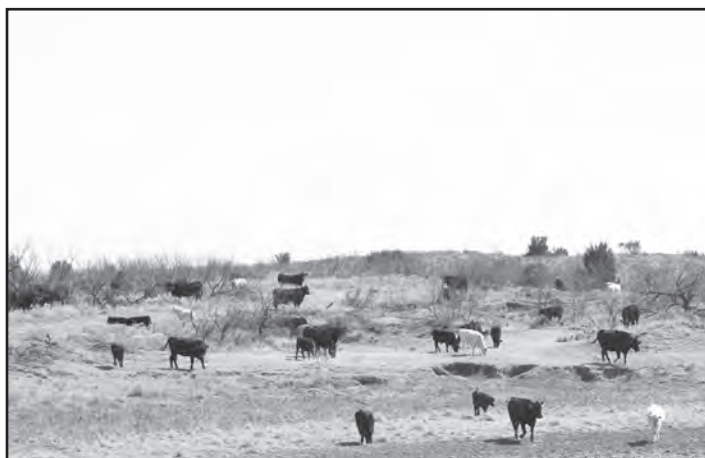
MS COOLEY JPOT 6601P2 ET

M6 COOL DUDE 6463 P ET  
SR LADY EASE 914 ET  
LT RIO BLANCO 1234 P  
PJ MS. GRIDMAKER 602 P  
LT WYOMING WIND 4020 PLD  
LC MISS LACI CAE 104  
CCR JACKPOT 1410K5 PET  
EATONS CADET 0661

EPDs	CE	BW	WW	YW	Milk	MCE	Mtl	TSI
	6.8	0.71	25	44	6.15	8.95	18.88	191
Performance	BW	AWW						
	93	487						

Price: \$1300

Another heifer out of a proven 10 year old cow With a Top 15% CEM EPD and Top 15% RE EPD.



## Lot 10-2 B3R E016 CCR 456 Z025 TW

**Birth Date:** 10/7/17 **Reg. #:** F1255463 **Tattoo:** E016

M6 TEN WHISTLES 456 P  
M859441

B3R Z025 CCR M2079020M  
EF1163568

M6 BELLS & WHISTLES 258 P  
M6 MS GAIN & GRADE 552 P

M6 MS TEN MAKER 1100  
B/T SMART CHOICE M207 ET

MS COOLEY SKY E 9020M ET

M6 COOL REP 8108 ET

KEYS TEN-ACIOUS 166S  
M6 MS TRADITION 526  
LHD CIGAR E46  
MISS HOODOO Z6017  
SKY MONT EASE 2078  
WCR MISS IMPRESS 9020ETP

EPDs	CE	BW	WW	YW	Milk	MCE	Mtl	TSI
	0.95	1.35	37	67	9.5	3.75	28.2	212.13
Performance	BW	AWW						
	97	566						

Price: \$1100

The smaller heifer of twins with a Top 20% WW EPD, Top 20% YW EPD, Top 20% Scrotal EPD, Top 25% Total Maternal EPD, Top 15% CW EPD, Top 3% RE EPD, Top 4% Fat EPD and Top 20% Terminal Sire EPD

## Lot 12-2 B3R E038 CCR 5106 X004

**Birth Date:** 10/22/17 **Reg. #:** F1254987 **Tattoo:** E038

M6 COOL & STOUT 5106 P ET  
EM875922

MS COOLEY PIONEER 1107X5  
F1125278

M6 COOL REP 8108 ET  
SR LADY EASE 914 ET  
LT RIO BLANCO 1234 P  
M6 MS RIO MAKER 9106 P ET  
EATONS PIONEER 9161  
EATONS MISS BILARA 4749

MS COOLEY CHARLIE 1107U102

M6 COOL DUDE 6463 P ET

PJ MS. GRIDMAKER 602 P  
EATONS EXPLORER 6343

RC CHARLIE 0327  
MS CCR SIRPAUL 1107L17 P

EPDs	CE	BW	WW	YW	Milk	MCE	Mtl	TSI
	4.7	-0.68	23	42	10.8	8.15	22.47	192.89
Performance	BW	AWW						
	76	490						

Price: \$1300

Help yourself with Quality and Calving Ease with this Top 20% CEM EPD and Top 15% Marbling EPD Heifer.

## Lot 14-2 B3R E019 CCR Z261 Z034

**Birth Date:** 10/22/17 **Reg. #:** F1255454 **Tattoo:** E019

M6 COOL MAKER 261 P  
M828790

B3R Z034 CCR W13 X004  
F1163665

M6 COOL REP 8108 ET

M6 MS 104 COMMANDER 7184 P ET  
DCR MR SOLUTION W13

MS COOLEY PIONEER 1107X5

M6 COOL DUDE 6463 P ET  
SR LADY EASE 914 ET  
M6 GRID MAKER 104 PET  
M6 927 COMMANDER 3165 ET  
EC NO DOUBT 2022 P  
JCH MS BULL DOZER T388  
EATONS PIONEER 9161  
MS COOLEY CHARLIE 1107U102

EPDs	CE	BW	WW	YW	Milk	MCE	Mtl	TSI
	6.45	-2.17	16	33	12.65	6.95	20.75	186.74
Performance	BW	AWW						
	75	442						

Price: \$1300

Last chance on a Charolais Heifer and she has a Top 15% BW EPD and Top 8% Fat EPD.

**Angus Heifer Sale starts  
on page 5, Lot 15-3.**

# Directions to the Ranch

**Please note: Directions from Map Quest, Google and YellowPages.com are incorrect to our ranch. Please use these directions instead.**

**BEWARE! Estelline, TX is a speed trap. If you drive through Estelline, please pay attention to the speed limit.**

**FROM CHILDRESS, TX:** US 287 NW 19 miles, turn right on FM 1619 (look for ranch sign), go 3 miles turn right at the B3R sign, go 4 miles on gravel road, ranch head quarters will be on your left.

**FROM MEMPHIS, TX:** US 287 South 11 miles, turn left on FM 1619, (look for ranch sign), go 3 miles, turn right at the B3R sign, go 4 miles on gravel road, ranch head quarters will be on your left.

**FROM WELLINGTON, TX:** US 83 South, go through blinking light at junction of 62 and 83 continuing South for 4 miles. Turn right at Vest Ranch sign, follow gravel road for 10 miles. Ranch head quarters will be on your right.

**FROM ALTUS, OK:** Go West on US 62 for approximately 49 miles. At US 83 intersection, turn left /south. Go four miles on 83. Turn right / west at the Vest Ranch sign onto County Road K. Follow gravel road for 10 miles. Ranch headquarters will be on your right.

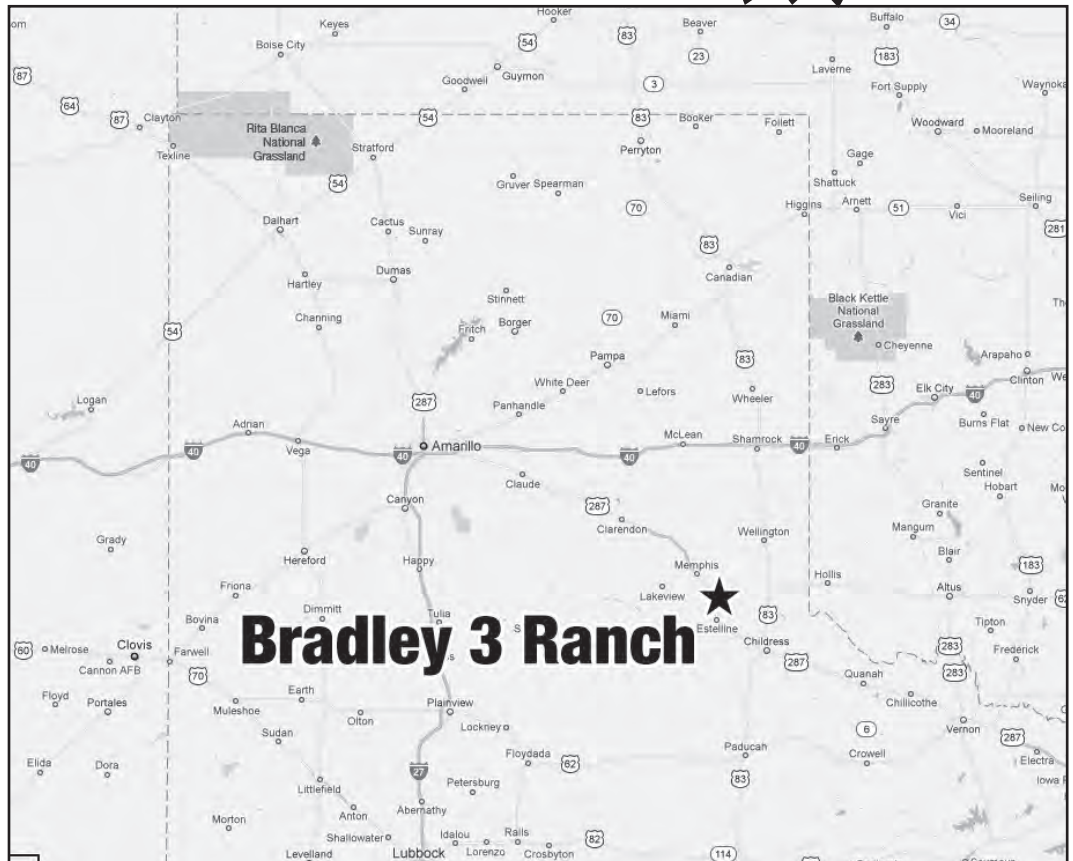
**MOTELS - CHILDRESS**

Hampton Inn (940)937-3500  
Sale Headquarters  
Holiday Inn Express (940)937-0900  
Days Inn (940)937-0622

**NEARBY AIRPORT FOR PRIVATE AIRCRAFT -**

Childress Municipal Airport - 6,000 X 75 asphalt runway; Jet A and 100 low-lead AV gas.  
Altus, OK - Quartz Mountain Regional Airport: (580) 482-8833 5000 ft runway, jet fuel available, hours of operation 7 a.m. - 9 p.m  
Altus, OK - Enterprise Rent A Car: (580) 480-1625 (off airport site)

From Amarillo, TX.....1.5-2 hours  
From Wichita Falls, TX .....2 hours  
From Oklahoma City, OK ..... 4 hours  
From Fort Worth, TX..... 4 hours



**PEN LOCATOR**

20	21										
18	19										
17	1	2	3	4	5	6	7	8	9	10	
16					15	14	13	12	11		
sale barn										NORTH →	

*The*  
**WIDIE**  
**BODY** *Sale*

**February 9, 2019**

*at the ranch, east of Estelline, Texas*



**Selling 200+ Angus Bulls  
and 60+ B3R Charolais Bulls!**

**Bradley 3 Ranch, Ltd.** 

Mary Lou, (940) 585-6471 • James, (940) 585-6171  
Ranch Office, (806) 888-1062

**[www.bradley3ranch.com](http://www.bradley3ranch.com)**

**Bradley 3 Ranch, Ltd.**

15591 CR K

Memphis, TX 79245-5003

[www.bradley3ranch.com](http://www.bradley3ranch.com)

COMMIT. INVEST. SUCCEED.

*"Because the cattle work..."*

**Join us on July 27, 2018 • 10:00 a.m.  
for our Annual Heifer Sale**

